

# Global Supply Chain “Close Watch”

## Why Gulfport?

- Cargo out & inbound
- Low dose gama irradiation
  - Unique competitive advantage
  - Significant shelf life extension
- 2yrs fees waived
- 2yrs free finished & unfinished office space
- Customs & Agriculture On-site
- Tax exempt fuel (Int'l)
- Scalability
- Multi-modal (Air, Sea, Rail, Road)
- State & Community Commitment
  - Legislation friendly
  - Community Support / Incentives



Outbound from Gulfport

Inbound to Gulfport

**Gulfport, Mississippi**  
 Catfish, Shrimp, Oysters & other commodities  
 xxst/wk  
 ready now

**Bogota, Columbia**  
 Roses & other agri-business  
 115st/week  
 ready now

**Quito, Ecuador**  
 Mangoes, Roses & Papaya  
 18-22st/wk  
 ready now

**Lima, Peru**  
 Fig, Pomegranate & other agri-business  
 Amount & Frequency  
 Available soon

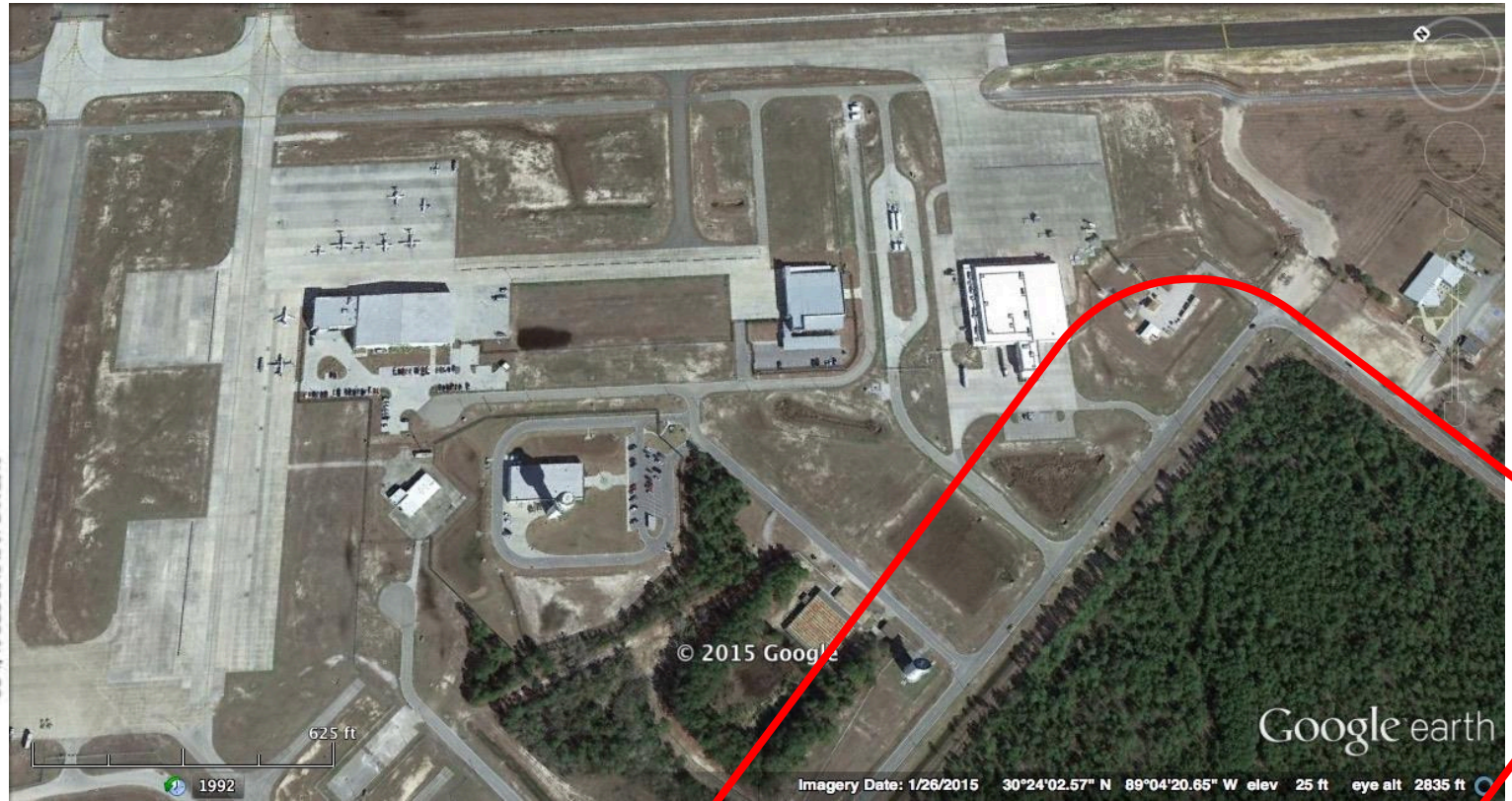
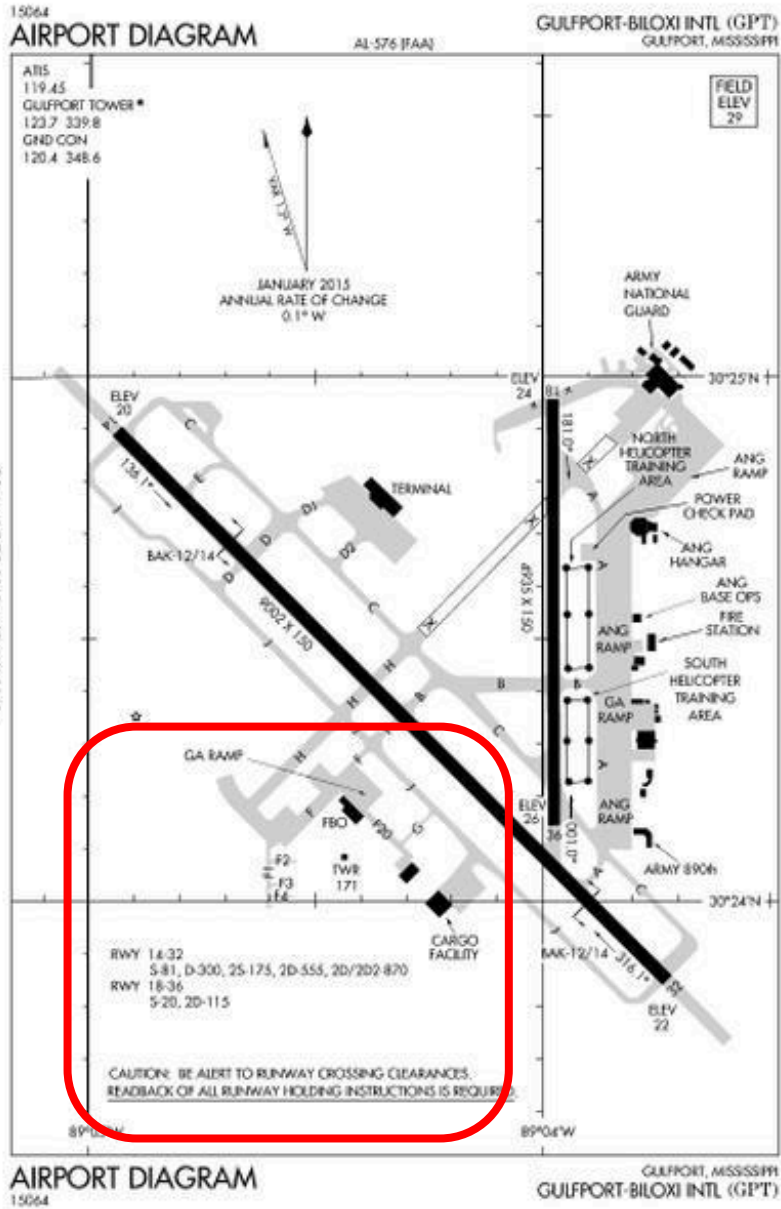
**Pretoria, South Africa**  
 Persimmons, Lychee & Grapes  
 Volume is high...standing by for final estimates

**Tel Aviv, Israel**  
 Persimmons  
 Amount & Frequency  
 Available soon

**Dubai, UAE**  
 Equipment  
 Amount & Frequency  
 Available soon

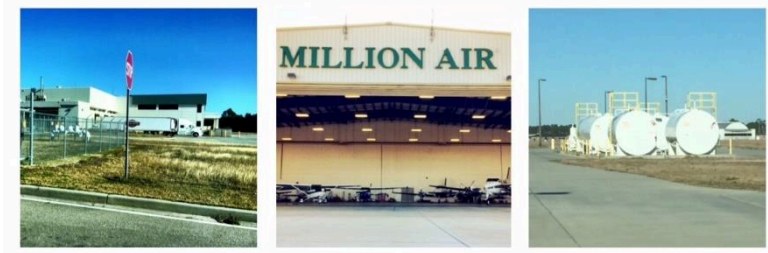
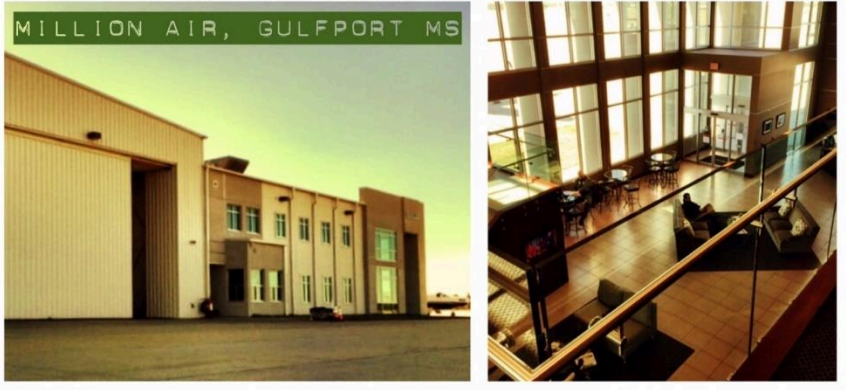
**Karachi, Pakistan**  
 Mangoes  
 230st/week  
 ready soon

**India**  
 New Delhi,  
 Mangoes & Pomegranates  
 115st/week  
 ready soon



Scalable Campus

# Million Air – Gateway America Facilities



# Global Supply Chain "Close Watch"

