



*Bogota, Colombia*

# Location

## Gateway America Air Cargo Perishable Treatment Center

### Interstate Access:

- 3 minutes from I-10
- 45 minutes from I-59
- 1 hour from I-65
- 2.5 hours from I-20



### Ports:

- 5 minutes from Port of Gulfport
- 1 hour from Port of Mobile
- 1.5 hours from Port of New Orleans



# Gateway America is a Primus Lab Certified Global Food Safety Initiative Facility (GFSI)

PrimusGFS is a **Global Food Safety Initiative (GFSI)** benchmarked and fully recognized audit scheme covering both GAP and GMP scopes as well as food safety management systems (FSMS). The **PrimusGFS** is owned and managed by **Azzule Systems**. PrimusLabs was the first Certification Body to be ISO 65 accredited and Azzule approved for this new GFSI audit.



PrimusGFS ID:76001 – Cert:2  
 CB Registration No.: PA-PGFS-7028 – 1  
 Revision: 1  
 Audit Date: Oct 06, 2015

## Certificate Issued To:

---

<b>Organization:</b>	Gateway America	<b>Certificate Valid From :</b>
<b>Operation:</b>	Storage & Distribution Center Gateway America	Nov 04, 2015 to Nov 03, 2016
<b>Product(s)*:</b>	4300 Air Cargo Rd Gulfport, Mississippi 39501, United States Lettuce, Onions, Honeydew Melons, Watermelons, Cantaloupe Melons, Potatoes	
<b>Certificate Level:</b>	99%	

---

Primus Auditing Operations certifies that this operation has complied with the applicable requirements of PrimusGFS Version 2.1

The scope of this certificate covers only the operation mentioned above.

PA-PGFS-	Option	Operation Type
7028	Facility	Storage & Distribution Center

\*Please refer to the audit report to read score, scope and commentary details

To see information about these Operations, go to the website at [www.primusgfs.com](http://www.primusgfs.com)

---

 <p style="font-size: x-small;">Observe. Report.</p>	 <p style="font-size: x-small;">ANSI Accredited Program PROJECT GROWTH INITIATIVE 1185</p>	<p>Authorized by:</p>  <hr style="border: 0; border-top: 1px solid black;"/> <p style="font-size: x-small;">Javier Sollozo, President, Primus Auditing Operations</p>
---	---	--

Primus Auditing Operations ■ 1259 Furukawa way ■ Santa Maria California 93458 United States ■ [PrimusGFSAdmin@primuslabs.com](mailto:PrimusGFSAdmin@primuslabs.com) ■ T 805.922.0055 / F 805.352.1364

This document is subject to changes. The current information and status of this operation is posted in the scheme's website at: [www.primusgfs.com](http://www.primusgfs.com)

# *On-Site Facility Features*

- Customs & Customs Agriculture
- USDA-APHIS-PPQ
- USDA-APHIS-PPQ Identifier



**U.S. Customs and  
Border Protection**



**United States Department of Agriculture**  
Animal and Plant Health Inspection Service

# Government Agencies

Due to the nature of our facility, we have numerous government agencies that inspect and audit our facility on a daily basis.

## Agencies:

- USDA-APHIS-PPQ-CPHST-AQI, and FSIS
- FDA, and FDA - Seafood
- Customs Border Protection (CBP)
- Transportation Security Administration (TSA)
- Nuclear Regulatory Commission (NRC)
- Department of Energy (DOE)
- Mississippi Department of Marine Resources (MDMR)
- Mississippi Department of Agriculture
- Alabama Department of Agriculture
- Alabama Department of Marine Resources (ADMR)
- Florida Department of Agriculture
- Mississippi Department of Health Radiological Department (MSDH)
- Local, State, and Federal Law Enforcement
- Occupational Safety and Health Administration (OSHA)
- Federal Aviation Administration (FAA)

# Dry Storage

- Vehicle restraint system on all dock doors
- 20,000sq.ft. of dry storage and distribution
- Direct access from dock doors to aircraft ramp
- Access controls control access to the secure area of the facility



# Cold Storage and Staging

- 20,000sq.ft. of cold storage
- Gateway America offers 3 cold chain atmospheres
- All dock doors are equipped with Kelly Door seals and vehicle restraint systems
- Our entire cold chain process is regulated, recorded, and monitored by Siemens Apogee system



# Ocean Cargo

## Ports Serviced:

- Port of New Orleans, LA
- Port of Gulfport, MS
- Port of Pascagoula, MS
- Port Bienville, MS
- Port of Mobile, AL



## Facility Services:

- Food Irradiation
- Fumigation
- Pre-Cooling
- Track & Trace
- 3<sup>rd</sup> Party Logistics
- Re-Pack
- Cross Docking
- Labeling
- Specialty Sorting
- Aircraft Ground Handling
- Nation Wide Trucking
- Freight Forwarding
- Foreign Trade Zone No. 92





# Air Cargo

- 400 X 400sq.ft. Air Cargo Ramp
- (2) FMC Main deck Loaders (40,000lbs) capacity
- (1) Lantis Lower deck loader (20,000lbs) capacity
- 33,000lbs capacity Caterpillar Forklift
- Cargo dollies
- Tugs
- TLD Dual Output Ground Power Unit
- (2) Air Stairs (MD-11) & B737-B747
- Rice Lake 10' X 8' 20,000lbs capacity scale with printer



# Air Cargo

## Incentive Programs for Air Cargo

- Foreign Trade Zone 92
- Tax free bonded fuel for international flights
- Aircraft ground handling
- Waived landing and takeoff fees
- Waived ramp fees



# *(KGPT) Air Cargo Expansion Area / Rail Line*

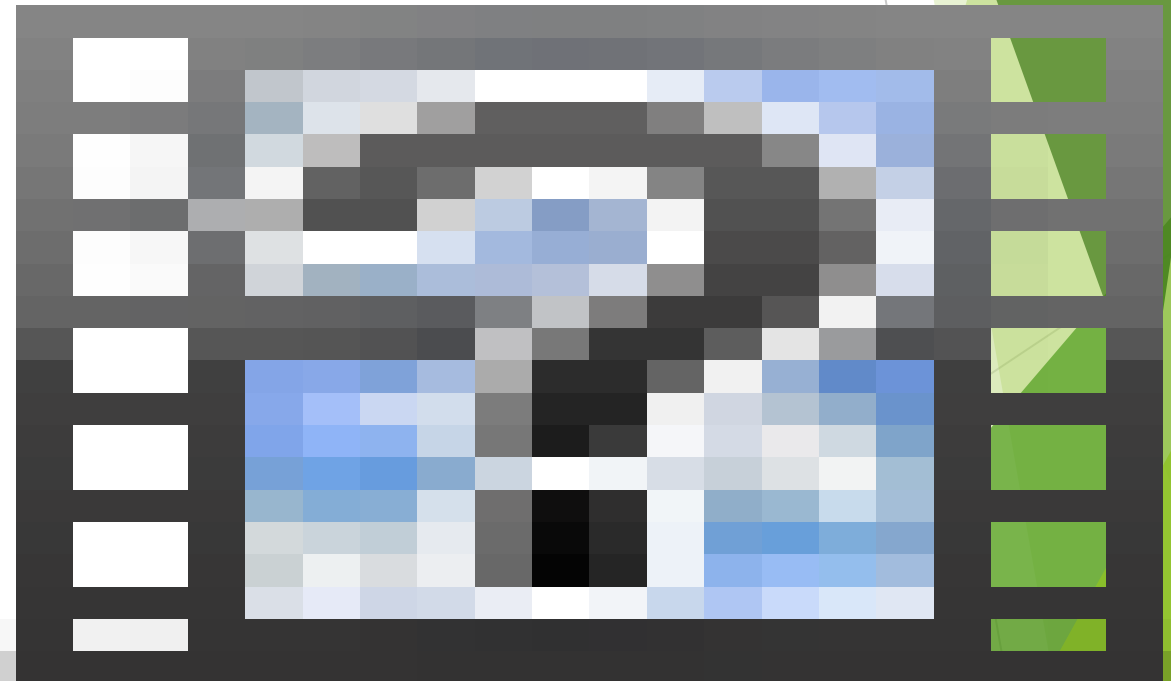
Gateway America has 120 acres of land south of the current air cargo facility for ramp and facility expansion.

Located South of the Air Cargo Facility there is Rail Spur that can be refurbished and utilized for cargo operations



# Fumigation System

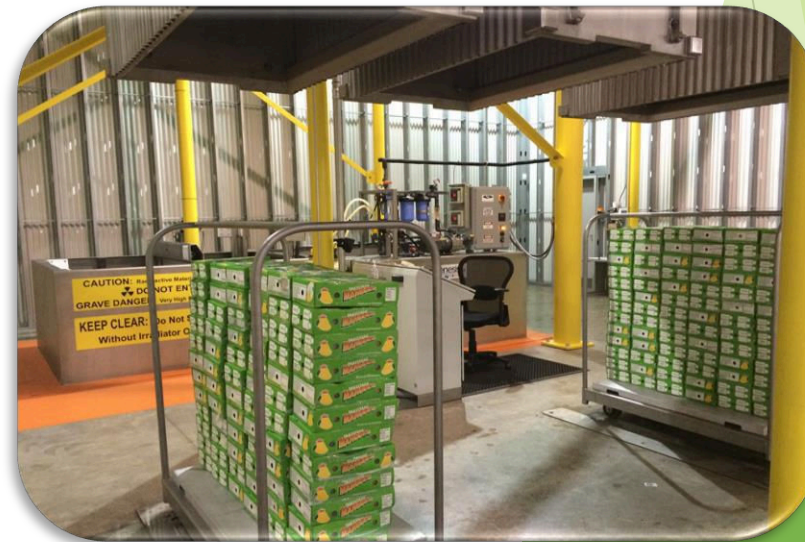
- (2) 40ft. Temperature controlled fumigation chambers
- Jet Pre-Coolers
- USDA Certified



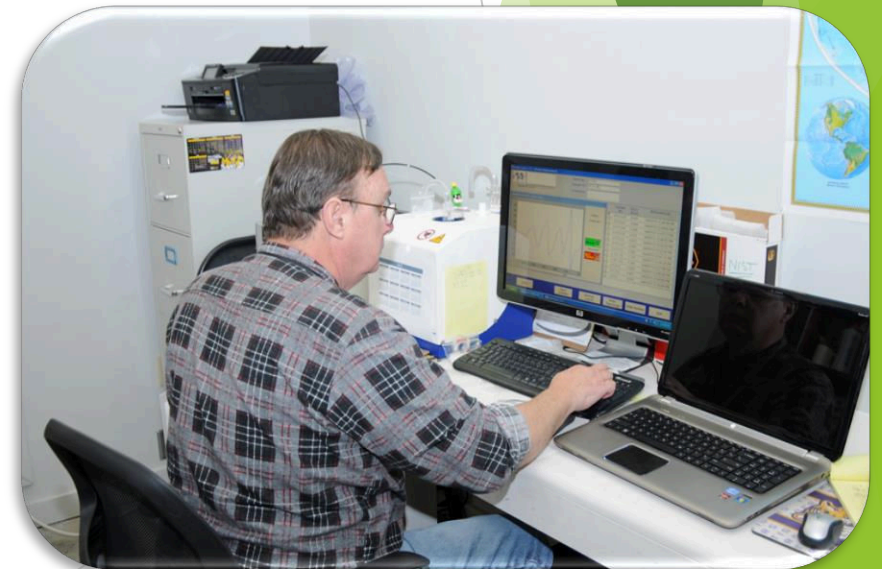
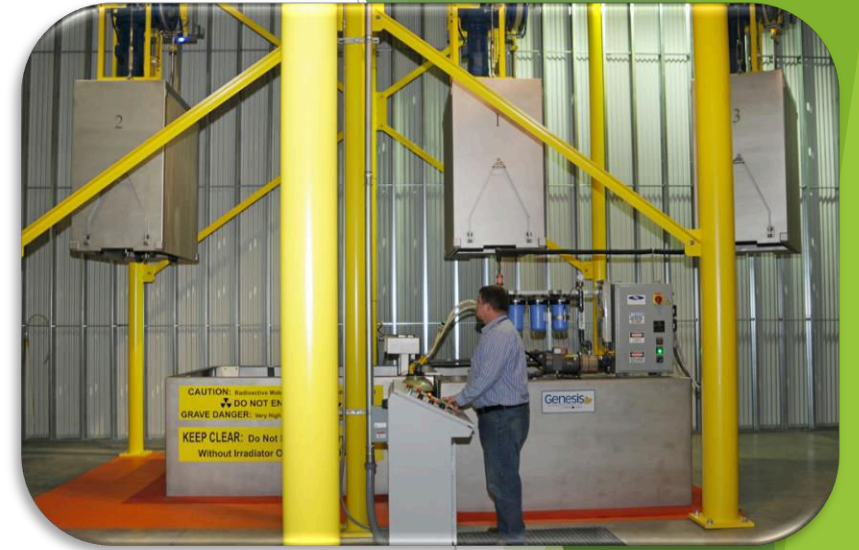
# Irradiation System

Reduces or eliminates harmful food borne pathogens such as:

- E.coli 0157:H7
- Salmonella
- Listeria
- Campylobacter
- Pseudomonas
- Vibrio Vulnificus, Parahaemolyticus

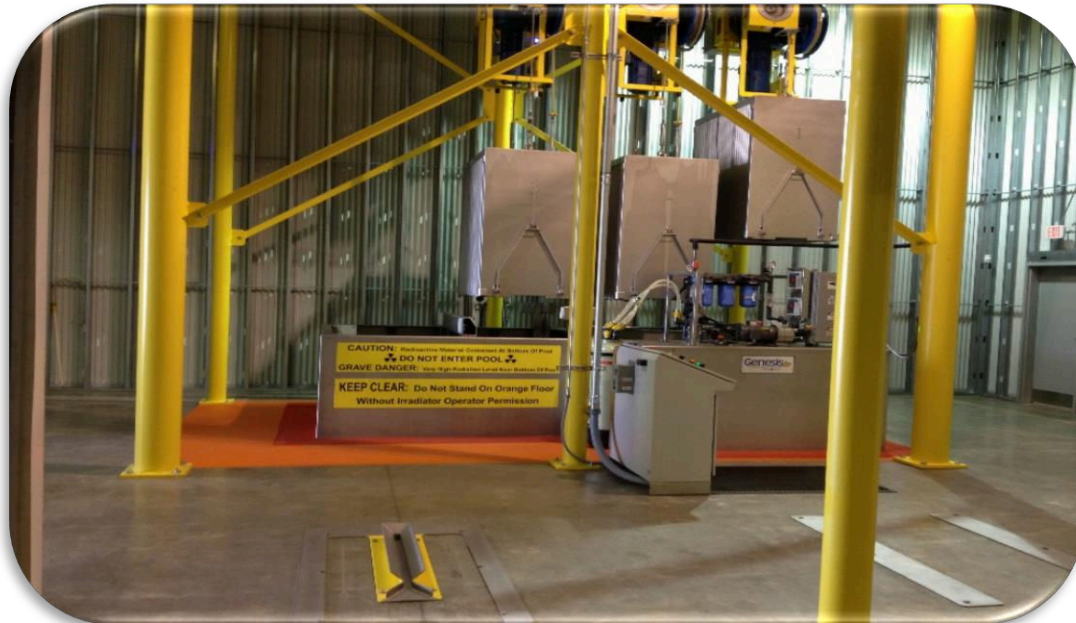


# Dosimetry System



# Produce Irradiation Summary

- Fresh produce will generally tolerate doses of 1kGy of irradiation although variation exists.
- Irradiation plays a role as one of many options in preserving fruit quality and microbial safety.
- Not only does our customer meet the regulatory requirement for importing product into the U.S. they generally see added shelf-life extension due to the elimination of spoilage bacteria



# Gateway America Rose Studies

Gateway America has been conducting studies on the effect irradiation has on vase life.

We have found that with low doses we have a great success rate.

Doses between 70Gy and 250Gy are ideal. We have had results starting from the cut date to the final date acceptable for the flowers condition between 25-28 days.

Gateway America working with USDA, has set up a treatment schedule at 400Gy that can be used in place of Methyl Bromide. This meets the phytosanitary requirements without the use of Methyl Bromide which, in most cases, lessens the vase life of your product.





# *Gateway America Rose Studies*

We are bringing in Universities to help gauge the progress on a biological level. We are working with Mississippi State University to develop the optimal dose for vase life extension.

We don't ask you to take our word for it. We suggest that growers and exporters work with Gateway America and Mississippi State University to become part of the extended vase life project.

Currently we are only working with Roses. We would like to partner with growers and exporters to expand our treatments to other flower groups.



# Gateway America Rose Study

0Gy Treatment  
Day 16



Colombia Freedom Roses Dose: Control 0Gy Cut Date: 5/4/15 Temp: room temp

Comments:

Dose: Control 0Gy Not Irradiated

Water has become clouded. Stems have started turning black. Flowers are wilthing

Wednesday 5/20/15 @9:30 am

200Gy Treatment  
Day 16



Colombia Freedom Roses Dose: 200Gy Cut Date: 5/4/15 Temp: room temp

Comments:

Dose: 200Gy Irradiated

Water remains clear. Stems are still green.

Wednesday 5/20/15 @9:30 am

# *Gateway America Rose Study ( Day 23 )*

0Gy Dose



Fumigated Methyl Bromide



150Gy Dose



# TRUCKING RATE COMPARISON TO MIAMI

DESINATION	GULFPORT MILES	MIAMI MILES	RATE FROM GULFPORT*	RATE FROM MIAMI*	SAVINGS OVER MIAMI
ATLANTA, GA	411	672	\$1,155.12	\$1,310.43	-\$155.31
BALITMORE, MD	1105	1120	\$2,507.15	\$2,513.10	-\$5.95
BOSTON, MA	1553	1527	\$3,452.08	\$3,009.13	\$442.95
CHICAGO, IL	965	1405	\$1,855.22	\$2,573.12	-\$717.90
COLUMBUS, OH	898	1170	\$1,885.10	\$2,177.18	-\$322.08
DALLAS, TX	641	1325	\$1,297.43	\$2,302.14	-\$1,004.71
DENVER, CO	1500	2100	\$3,007.12	\$3,737.10	-\$729.98
DES MOINES, IA	1075	1650	\$1,953.15	\$2,813.18	-\$860.03
INDIANAPOLIS, IN	793	1219	\$1,574.89	\$2,172.15	-\$597.26
LITTLE ROCK, AR	500	1200	\$1,215.15	\$2,152.13	-\$936.98
LOS ANGELES, CA	2026	2779	\$3,917.81	\$4,937.18	-\$1,019.37
MINNEAPOLIS, MN	1300	1830	\$2,551.81	\$3,422.21	-\$870.40
MOBILE, AL	77	735	\$652.18	\$1,355.21	-\$703.03
NEW ORLEANS, LA	82	872	\$652.18	\$1,611.14	-\$1,008.96
NEW YORK, NY	1307	1315	\$2,869.69	\$2,451.15	\$418.54
PITTSBURGH, PA	1070	1181	\$2,251.15	\$2,252.21	-\$1.06
RALEIGH, NC	820	810	\$1,758.14	\$1,657.18	\$100.96
ST. LOUIS, MO	731	1240	\$1,451.81	\$2,257.14	-\$805.33
TORONTO, ON	1283	1400	\$3,617.81	\$3,051.12	\$566.69
WASHINGTON, DC	1060	1075	\$2,452.21	\$2,513.56	-\$61.35

\*THESE ARE SPOT QUOTES ON AVERAGE REFRIGERATED VAN LOADS

\*\*HIGHLIGHTED AREAS REFLECT LOWER COST AND MORE EFFICIENT TRAVEL TIME FROM GULFPORT TO SEVERAL NORTH AMERICAN CITIES



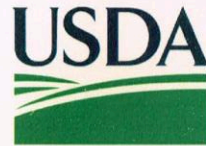
*Fruit & Vegetables Export with Irradiation  
Port of Entry Treatment (POE)*

In April of 2013  
Gateway America  
was approved for  
treatments including:

➤ PORT OF ENTRY

➤ EXPORTS

➤ DOMESTICS



United States  
Department of  
Agriculture

Animal and  
Plant Health  
Inspection  
Service

Plant Protection  
and Quarantine

## *Certificate of Approval*

For: Irradiation

Type of Facility

This treatment facility and associated equipment have been examined and found acceptable for use in the treatment of articles regulated under the provisions of quarantines and regulations administered by Plant Protection and Quarantine.

Gateway America LLC.

Name of Facility

Ryan Hollingsworth

Operator

4300 Airport Cargo Rd, Gulfport MS 39503

Location

Conditions of Approval:

1. The facility must operate under the conditions in the compliance agreement.
2. The facility can conduct port of entry, export, and domestic phytosanitary irradiation treatments.
3. Treatments must follow approved process configurations.
4. See compliance agreement for conditions under which recertification is required.

April 24, 2013

Date Approved

Laura Jeffers

Certifying Official

none

Expiration Date

Pest Exclusion Specialist

Title

# Colombian Exports

These are some of the many exports of Colombia that would see advantages from Irradiation treatment.

- Mango \_\_\_\_\_ USDA Not Currently Listed for Export
- Papaya \_\_\_\_\_ Does Not Meet Phytosanitary Requirements Pre-Clearance Program Cancelled
- Pitahaya \_\_\_\_\_ Does Not Meet Phytosanitary Requirements Pre-Clearance Program Cancelled
- Melon Watermelon \_\_\_ USDA Not Currently Listed for Export
- Peppers \_\_\_\_\_ USDA Not Currently Listed for Export
- Mangosteen \_\_\_\_\_ USDA Not Currently Listed for Export
- Pomegranates \_\_\_\_\_ USDA Cold Treatment Only for Export



# *Framework Equivalency Work Plan (FEWP)*

## *Operational Work Plan (OWP)*

Gateway America works with:

- Host Countries
- National Plant Protection Organization (NPPO)
- USDA- APHIS

To establish the necessary dialog to build and implement their Framework Equivalency Work Plan (FEWP). This is a basic trade reciprocity agreement.

Once that is complete we will work with the growers and importers to establish the Operational Work Plan (OWP). This is a simple document stating intentions and project overview.

This covers:

- Packaging materials / Pest Proof Packing (PPP)
- Routing
- Logistics



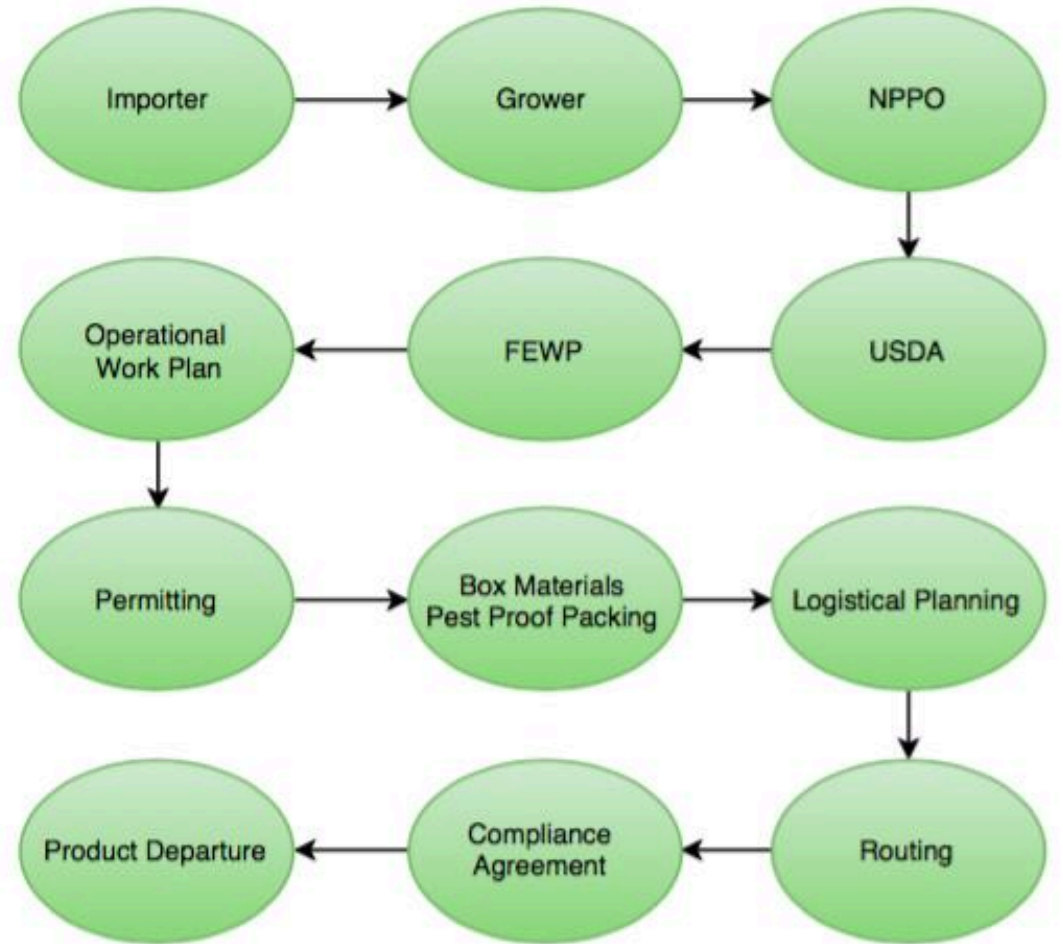


# Port of Entry Treatments

Due to some of the complexities of handling (POE) treatments it is important to understand some of the steps and actions to be taken.

For many of our importers this may be the first time they have ever imported product into the US. We work with the importer and USDA to ensure that all of the protocol steps are followed such as:

- eAuthentication and applying for level 2 access for ePermits
- Routing, Compliance Agreements, and Permitting
- Finding the Customs Broker that fits their needs
- Labeling Requirements
- Logistics
- Distribution Planning and Execution

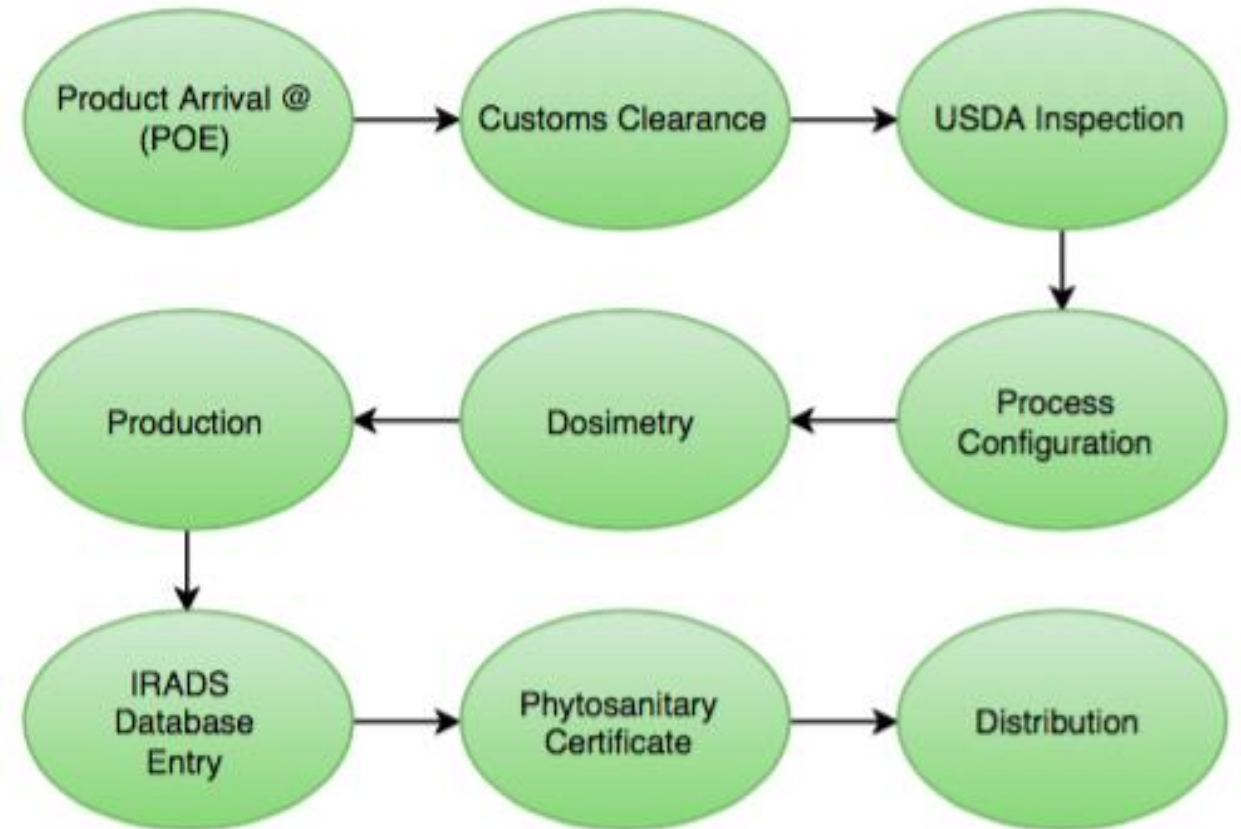


# Port of Entry Treatments

For Gateway America understanding the entire process is key. If one small piece of the puzzle is overlooked it could delay an importer by months and could delay the import until the next growing season.

Example:

One of our customers at Port of Origin forgot to mark one of their pallets as a SAMPLE PALLET. US Customs came very close to re-exporting that entire shipment which was about 39,500 lbs. Thankfully Gateway America and USDA were able to work with US Customs to resolve the issue.



# *Connect with Gateway America*

**Gateway America, LLC.  
4300 Air Cargo Rd.  
Gulfport, MS 39501  
Office: (228) 331-1473**

**Frank Benso  
President  
Wireless: (217) 621-3140  
Frank@gatewayamerica.net**

**Ryan Hollingsworth  
VP Of Operations  
Wireless: (228) 547-6546  
Ryan@gatewayamerica.net**